

# WelbeHealth's Program of All-Inclusive Care for the Elderly (PACE)

01/24/2023



CMS Approval 12/21/2022

H1544\_134EN\_1222

# Our purpose

To unlock the full potential of our most vulnerable seniors.

# Our core values guide everything we do



## **Courage to love**

We prioritize human connection and value every precious life we touch.



## **Pioneering spirit**

We relentlessly pursue resourceful solutions to support participant health and independence.

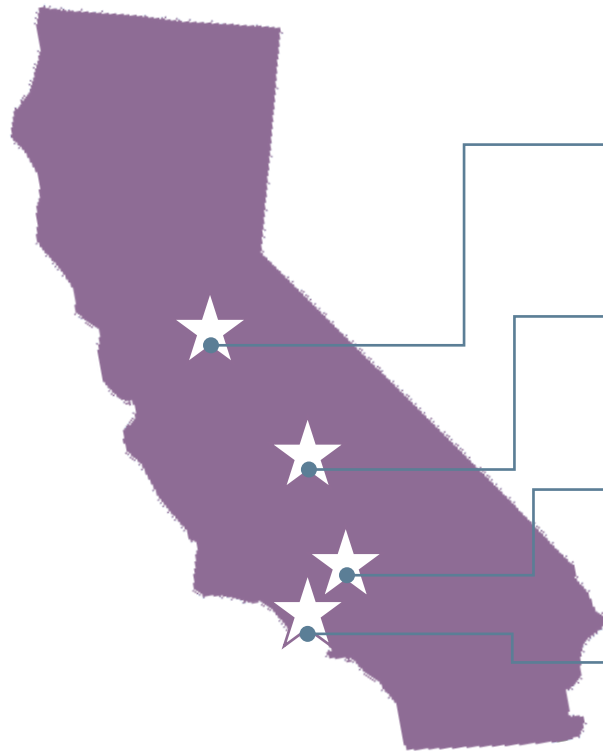


## **Shared intention**

We work as a team with a common purpose. We start by listening, promote and contribute diverse perspectives, and support team decisions.

# WelbeHealth Locations

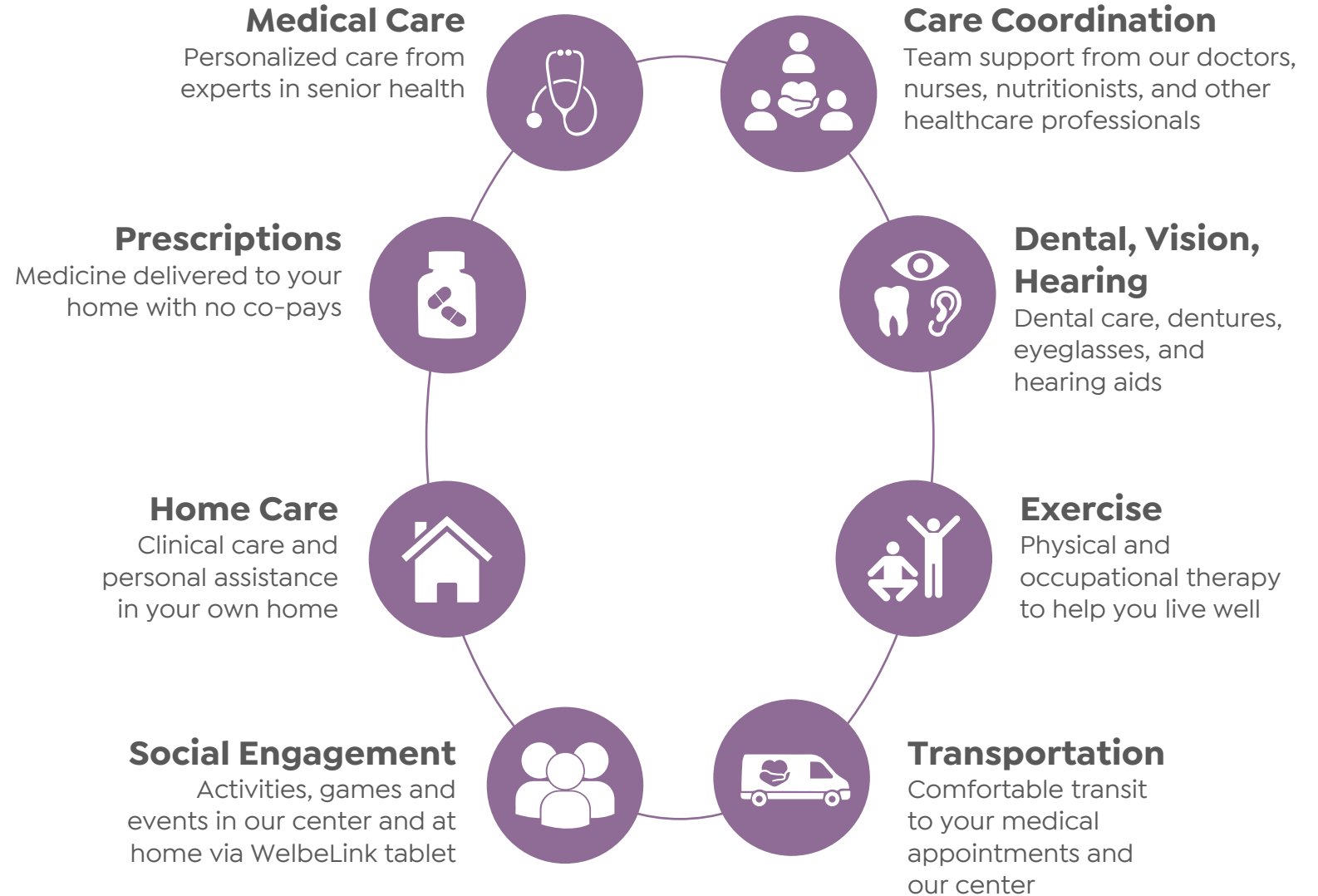
We operate PACE (Program of All-Inclusive Care for the Elderly) in these California regions:



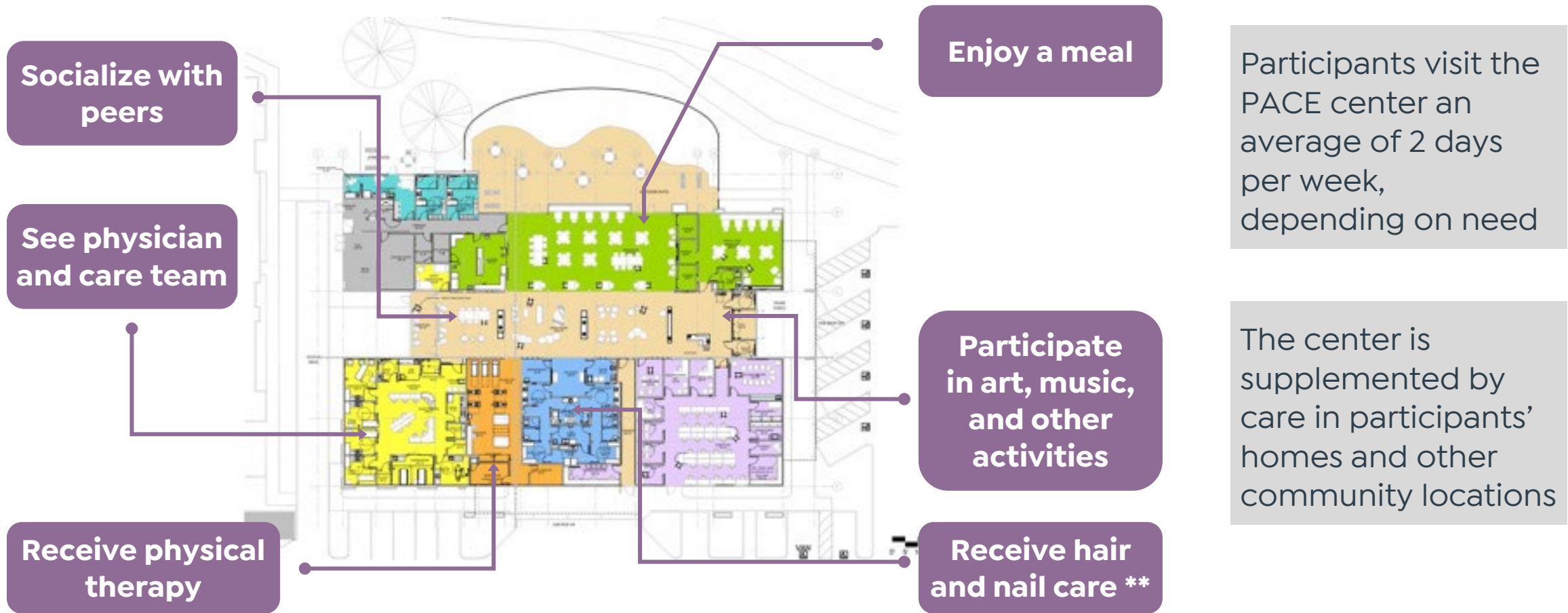
- **Stockton center and Modesto\* (ACS) center**  
Serves San Joaquin and Stanislaus Counties
- **Fresno center**  
Serves Fresno, Clovis, Madera, Hanford, Tulare and surrounding cities
- **Pasadena center**  
Serves Pasadena, Glendale, Burbank, and surrounding communities
- **Long Beach center**  
Serves Long Beach and the South Bay Area

\* Our Modesto Center is an Alternative Care setting. Day services are delivered locally in Modesto, while our primary care clinic is in Stockton.

# We provide all-inclusive medical and social care



# Our center is a hub for participant care



Participants visit the PACE center an average of 2 days per week, depending on need

The center is supplemented by care in participants' homes and other community locations

*{Image may change to help describe the participant care activities}*



# How much does it cost?

Complete health care coverage includes:

- \$0 doctor visits
- \$0 dental visits
- \$0 prescription drug coverage
- \$0 monthly premiums
- \$0 health education programs
- \$0 vaccinations

*\* For those who are eligible.*





# Who is eligible?

- 55 or older
- Living in our service area
- Eligible for nursing facility level of care
- Able to live safely in the community with our support at time of enrollment

**90%** are dually eligible Medicare and Medi-Cal

**9%** are Medi-Cal only

**1%** are Medicare only



# How can I qualify?

A patient with one or more of these health challenges may be eligible for nursing facility level of care:

- Compromised ADLs and IADLs
- Cognitive impairment or behavioral health concerns
- Non-compliance/adherence with medications
- Risk for falls due to mobility issues
- Poorly controlled diabetes mellitus
- Dialysis
- 80 years of age or older



# 4 Steps to Enroll



- Review the program benefits, requirements limitations and enrollment process.
- Fill out the application with you.
- Help you apply for Medi-Cal, if needed.

- A WelbeHealth nurse completes your health review and submits it to the state.
- Sometimes social workers, physicians, and others help with the review.

- Review program details and answer questions.
- Deliver Welcome Kit and complete forms, including signatures.

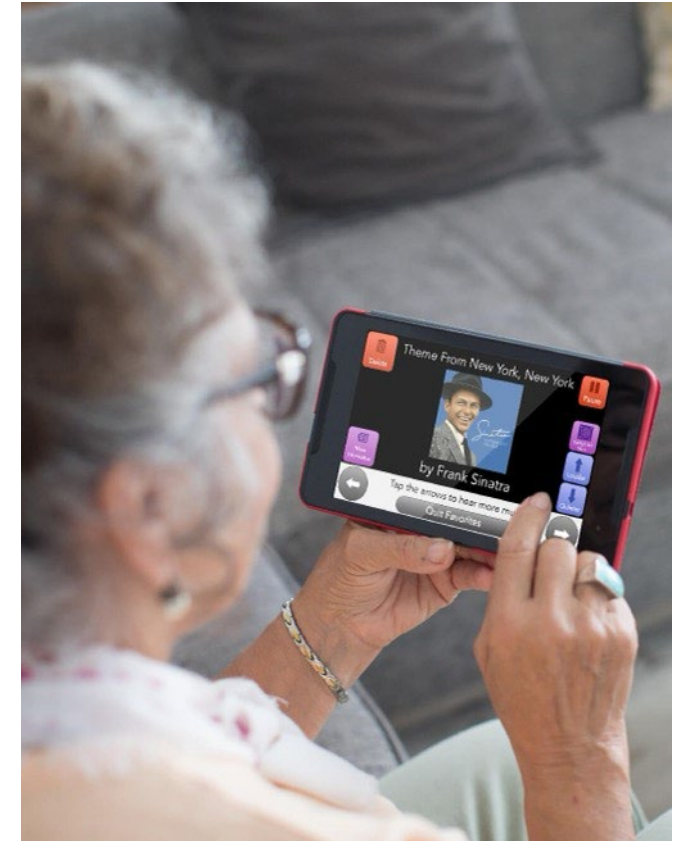
- Up to 8 health reviews in your first month to set up your care plan.
- Your personal navigator helps you every step of the way.
- Your WelbeHealth team will call you often to get to know you better.

# Helpful things to know

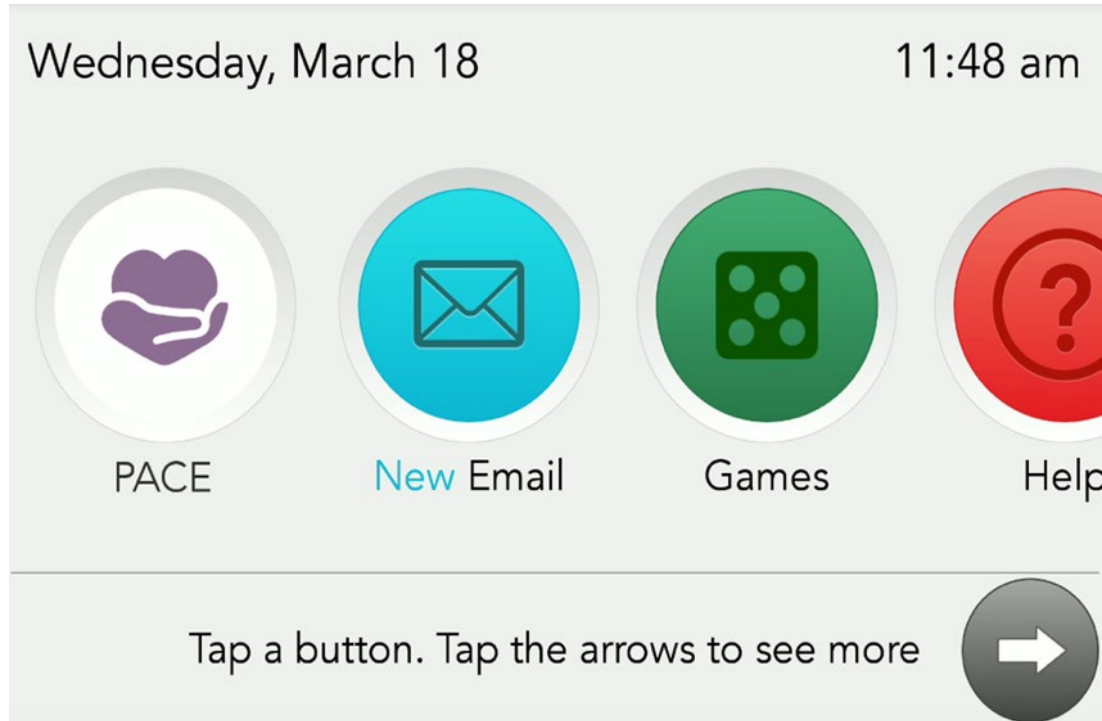
- Enrollment into WelbeHealth PACE programs is voluntary
- Enrollment process can take 15-45 days, depending on individual's situation
- Participant can disenroll at the end of any calendar month
- Once enrolled, all covered health care services in non-emergency situations will be provided through WelbeHealth providers and in-network specialists only
- Medical services required in an emergency may be obtained from WelbeHealth providers or from non-WelbeHealth providers, if necessary

# Our home-based model of care is the “gold standard” for frail seniors during the pandemic

- **We continue to enroll new participants** for whom we can provide a safe and effective model of care, helping seniors live at home and avoid nursing facilities, which have been particularly hard-hit by viral outbreaks
- **In-person medical care performed in the home whenever possible**, with no two team members in the same room unless essential for care
- **We provide a 4G LTE WelbeLink tablet to each senior**, enabling regular video communications to manage medical and social needs
- **Games and recreational activities continue remotely**, combatting dangerous social isolation



# We engage participants in their own homes via WelbeLink tablet



# Takeaways – WelbeHealth’s ABCs

## A. Allowed criteria to qualify:

1. Age 55+
2. Must live in our service area
3. Eligible for nursing facility level of care

## B. But What's Covered?:

Full-service senior health care covered by Medicare and Medi-Cal, at no cost for those who qualify

## C. Call:

Yvonne Battiste (562) 800-6919 or email at

[Yvonne.battiste@welbehealth.com](mailto:Yvonne.battiste@welbehealth.com) for more information or a center tour

<http://welbehealth.com>

