

Where L.A. supported the transit improvement measure

The vote for Measure M
100% of precincts voting

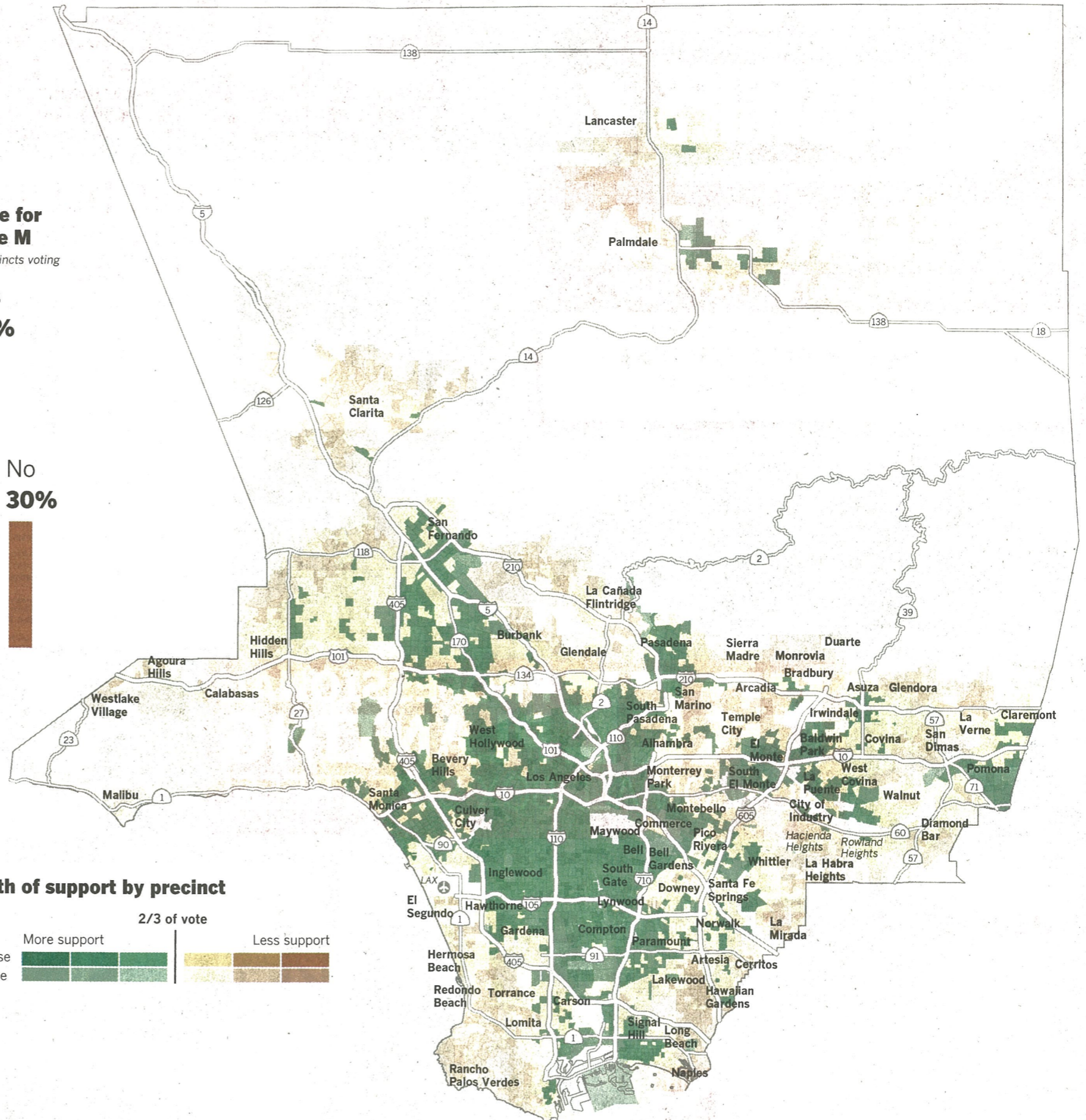
Yes
70%



No
30%



Strength of support by precinct



Sources: L.A. Metropolitan Transportation Authority, County of Los Angeles

LORENA INIGUEZ ELEBER, THOMAS SUH LAUDER, Los Angeles Times