

Inserting Mosquito Mesh screen



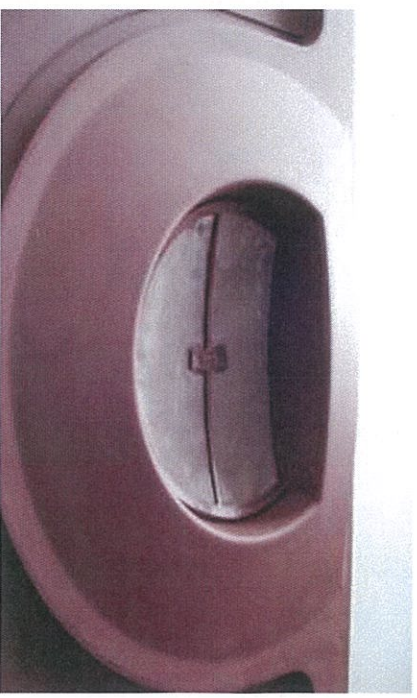
Mosquito Mesh Screen



Mosquito Mesh screen turned over with two spikes in the center



Insert Screen as shown above



Mosquito Mesh Screen inserted on the top of the Lid

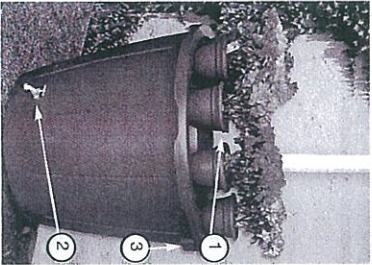
INSTALLATION

YOU WILL NEED

- Downspout Diverter (1) (to be purchased separately)
- Hack saw
- Level
- Drill with 1/8" Drill Bit and screws to secure the downspout diverter to the downspout

TO START

- Start by choosing a location for the Koolscapes Environmental Rain Barrel where there is a downspout nearby.
1. Place the Downspout Diverter (1) on the top of the Rain Barrel and hold it up to the Downspout and mark a line with a pencil.
 2. Using the Hack saw cut a straight line at the mark you just made.
 3. Attach a downspout diverter to the downspout and connect so that it sits on the screen guard on the top of the Rain Barrel.
 4. Using the Level ensure your Rain Barrel is level to avoid tipping when full.
 5. Ensure that the spigot (2) is inserted into the fitting in the bottom front of the Rain Barrel – turn in clock wise direction until it is sealed tight.
 6. Child-proofing: After placing the lid in position, insert the 2 screws provided in the pre-drilled holes on the rim. See instructions.



CARE AND MAINTENANCE

The Koolscapes Environmental Rain Barrel needs little care.

- There is an overflow spout (3) in the back to prevent water from overflowing out the top of the Rain Barrel. To divert the water away from your home simply attach a backwash hose to the overflow spout and run through your garden or lawn for slow watering. See instructions.
- Also if you get a lot of rainfall in your area you may want to have several rain barrels to harvest the rainwater. To connect another Rain Barrel you will need to attach tubing to the overflow spout and secure with a clamp. Connect the other end of the tubing to the overflow spout of the second rain barrel and secure with a clamp.



INSTALLING THE OVERFLOW NOZZLE

If you would like to divert the overflow from the barrel into a hose and direct it away from the barrel location, install the included hose barb fitting as follows:

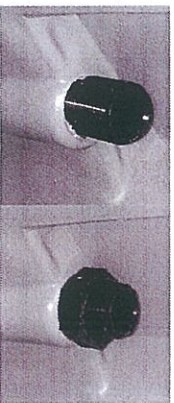
Note that the hose barb has a square collar between the threaded end and the hose end. One corner of this collar has been cut off to provide clearance against the side of the barrel. Make sure this cut off corner is against the barrel wall.



It may be more convenient to install the hose onto the barb before inserting the fitting into the barrel. It may not be necessary to use a hose clamp here (since there is no internal hose pressure), however if you choose to do so, make sure the "bulb" of the hose clamp is located on the side opposite the cutoff corner.

If it is desirable to prevent any leakage past the fitting (when the barrel is full) put a bead of silicone caulking (not included) around the base of the thread, on top of the square shoulder, before inserting into the barrel.

During really heavy rains, if the barrel fills to capacity, the water deluge may exceed the capacity of the overflow to divert water. Keep this in mind when landscaping the location of the barrel.



Install the threaded end into the barrel and install the plastic nut. **KEEP IN MIND THAT YOU ARE WORKING WITH PLASTIC MATERIALS. DO NOT OVERTIGHTEN** or you may damage your barrel.

Run your overflow hose to an area that is suitable for handling the extra water.

INSTALLING TAMPER RESISTANT SCREWS

To prevent casual opening of the rain barrel lid by children or pets, we have included 2 stainless steel screws with your rain barrel. The installation instructions are below.

INSTALLATION INSTRUCTIONS

You will need: masking tape, ruler or measuring tape, pen, electric or hand drill, 1/8th and 3/16th inch drill bits and a Robertson #2 (red handle) screw driver.

Flip the lid onto its back. Inside the lid on the curved surface, there are two rows of plastic lumps. About 1/2 an inch from the last lump, moving towards the centre of curvature is a vertical parting line moulded into the plastic.

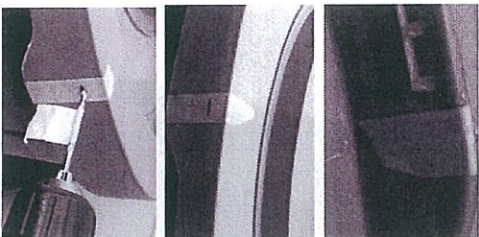
Place a 3 or 4 inch piece of masking tape (vertically) on this parting line and attach it over the lip and onto the top side of the lid.

Place another masking tape similarly on the other half of lid. Turn the lid over so the top side is up. Mark a line on the masking tapes, 1/2" below the upper lid surface.

Also put a masking tape flag onto the end of your 1/8" drill bit about 1/2" back from the drill tip. This is your depth guide so you only drill the outer edges of the barrel & lid.

Place lid onto the barrel and hold it down tightly. Drill a 1/8th" diameter hole through both lips ONLY of lid and barrel

DO NOT GO DEEPER (to avoid penetrating into the barrel body).



Lift the lid off the barrel, turn it upside down. Enlarge ONLY the LID HOLES using the 3/16 inch drill bit. Once the Left and Right LID HOLES have been enlarged, remove the masking tape. Place the lid onto the barrel and insert the two Stainless steel screws.

