

# Bay Watch

## Summer 2017

A quarterly bulletin to inform local leaders of subregional progress and alert them to emerging issues

Published by the South Bay Cities Council of Governments

### Governing Board:

**Chair**  
Kurt Weideman  
*Torrance*

**1st Vice Chair**  
Britt Huff  
*Rolling Hills Estates*

**2nd Vice Chair**  
Christian Horvath  
*Redondo Beach*

**Immediate Past Chair**  
James Osborne  
*Lawndale*

**Members:**  
Carson  
County of LA  
El Segundo  
Gardena  
Hawthorne  
Hermosa Beach  
Inglewood  
Lawndale  
Lomita  
Los Angeles  
Manhattan Beach  
Palos Verdes Estates  
Rancho Palos Verdes  
Redondo Beach  
Rolling Hills  
Rolling Hills Estates  
Torrance

**SBCCOG Executive Director**  
Jacki Bacharach

**Legal Counsel**  
Michael Jenkins  
*Jenkins & Hugin LLP*

**Website:**  
[www.southbaycities.org](http://www.southbaycities.org)  
**South Bay Environmental Services Center:**  
[www.sbesc.com](http://www.sbesc.com)

## SBCCOG AND SOUTH BAY WORKFORCE INVESTMENT BOARD COLLABORATE ON SOUTH BAY HIGH SPEED INTERNET ACCESS

Streets, sewers, light poles, water distribution, bridges and tunnels are what most people think of as a city's infrastructure. Today, telecommunications networks, especially connections to the Internet, must also be considered essential components of the South Bay's infrastructure. And like the other components, there are wide variations in quality and performance.

Last year, the SBCCOG in collaboration with the South Bay Workforce Investment Board (SBWIB) commissioned a study of the South Bay's network infrastructure. The results are now in and can be found at [www.southbaycities.org](http://www.southbaycities.org)

The study completed by leading consulting firm, Magellan Advisors, came to the following conclusions:

- It is inefficient and expensive for cities to purchase network services individually at retail prices as they do now.
- The network infrastructure and the services cities currently consume are far from world class and even below the standards necessary to retain or attract certain business types.
- The current market place provides few options for businesses or residents.
- The system of technology vendors is complex so that a much deeper knowledge-base is needed for cities to make informed decisions about the future.

In order to address these conditions, the SBCCOG is in the process of developing an integrated fiber backbone network that will collect or aggregate the data traffic generated by each city so that the cities can purchase together at wholesale prices.

In this way the same expenditures will purchase more network capacity and speed, both of which will be required for a new generation of services and applications that are here now and will continue to roll out over the next few years.

To name just a few examples, most computer software is being sold as a "cloud" based service which requires fast connections to the Internet for even basic programs such as Microsoft Office Suite. Free WiFi around public parks and libraries requires extraordinary amounts of network capacity to function efficiently. 5G cell networks are coming and they will require high capacity networks for transmitting the data each tower collects to the Internet. And of course technologies on the horizon like Virtual Reality will multiply the demand for data transport.

In order to advance the fiber backbone network initiative, the SBCCOG and SBWIB are seeking funding that will pay for the development of educational materials. Elected officials, other municipal decision makers, Chambers of Commerce, other business community leaders, and educational institutions are the targets.

The next step will be to collect support letters from each city that express interest in the fiber network at the right service level and price. These letters won't commit the city to participate in the network but will allow the SBCCOG to issue a request for proposals so that we can find out what this collaborative effort can yield in terms of cost and service.

The SBCCOG's release of request for proposals will be followed by evaluation of the best teams and technologies by a committee of city staff members. The winner will be awarded a contract to develop the fiber backbone, the first step toward assembling a world class network infrastructure for the South Bay cities.

The initial feasibility study was funded by the SBWIB. The SBCCOG is hopeful that this collaboration is the first of many that can benefit South Bay cities, businesses and the work force.

For further information, contact SBCCOG at 310-371-7222 



## SBCCOG LAUNCHES ONLINE RESOURCE FOR ENVIRONMENTALLY FRIENDLY LANDSCAPING, GARDENING AND PEST CONTROL

Transitioning to more environmentally friendly landscaping and pest control methods benefits fish and wildlife in and around local waterbodies here in the South Bay. Designing and planting a landscape that minimizes the need for fertilizers and pesticides can go a long way in creating a beautiful and productive garden. With that in mind, SBCCOG has launched a new online resource: “Environmentally Friendly Landscaping, Gardening and Pest Control”. This new web-based program provides links and tips to the most effective and least toxic ways to maintain landscapes and manage pests, while ensuring the protection of the local environment.

South Bay homeowners and gardeners can learn about important environmentally friendly landscaping practices such as Integrated Pest Management (IPM), which is a tiered strategy that uses a combination of methods for preventing and controlling common household pests while minimizing the risks to people and the environment. Preferred IPM methods include barriers and other types of physical controls, and biological and cultural methods—only deploying targeted chemical control as a last resort. IPM can be used to manage all kinds of pests such as weeds, insects, and rodents; taking

into account the type of pest, its biology, and environmental factors to determine the most appropriate management strategy.

The “Environmentally Friendly Landscaping, Gardening and Pest Control” webpages also provide access to a “California Friendly Landscape” garden guide; list best management practices for using pesticides and fertilizers; talk about backyard composting and more. To learn more about these topics please visit: <http://southbaycities.org/programs/environmentally-friendly-landscaping-gardening-and-pest-control>.



Find SBESOC at [www.sbesoc.com](http://www.sbesoc.com)  
Find SBCCOG at [www.southbaycities.org](http://www.southbaycities.org)



## WELCOME SHERIFF MCDONNELL



South Bay elected officials with Sheriff McDonnell (left to right): Dan Reid (Lawndale); Jim Goodhart (former Councilman, Palos Verdes Estates); Frank Zerunyan (Rolling Hills Estates); David Lesser (Manhattan Beach); Suzanne Fuentes (El Segundo); Britt Huff (Rolling Hills Estates); Jeff Duclos (Hermosa Beach); Bea Dieringer (Rolling Hills); Kurt Weideman (Torrance); Sheriff McDonnell, Anthony Misetich (RPV); Jim Osborne, SBCCOG Chair (Lawndale); Bernadette Suarez (Lawndale); Christian Horvath (Redondo Beach); Olivia Valentine (Hawthorne); Lula Davis-Holmes (Carson); David Riccitiello (for Dist 2 Sup. Ridley-Thomas); Dan Medina (Gardena); Erika Velazquez (for Dist 4 Sup. Hahn); Jim Gazeley (Lomita).

At the May 25, 2017 SBCCOG Board of Directors’ meeting, Chair Jim Osborne and the SBCCOG Board members welcomed Los Angeles County Sheriff Jim McDonnell. Sheriff McDonnell gave an update on current crime related issues facing Los Angeles County including significant impacts he sees occurring for local city/county jails and communities as a result of the passage of recent legislation, including AB 109 and Propositions 47 and 57. Sheriff McDonnell urged local governments to partner with law enforcement in advocating regarding crime legislation.



# SANITATION DISTRICTS ADDRESS AGING CRITICAL INFRASTRUCTURE

The Sanitation Districts of Los Angeles County (Sanitation Districts) operate and maintain the main sewer system designed to collect and treat the wastewater (sewage) from over 5 million people in the Los Angeles basin. This system is known as the Joint Outfall System and a critical component is the tunnel and outfall system that conveys treated wastewater from the Sanitation Districts' largest treatment plant (the Joint Water Pollution Control Plant (JWPCP) in Carson) to the ocean. The treated water meets or exceeds all regulatory requirements and the tunnel and outfall system provides for ocean discharge in an environmentally protective manner.

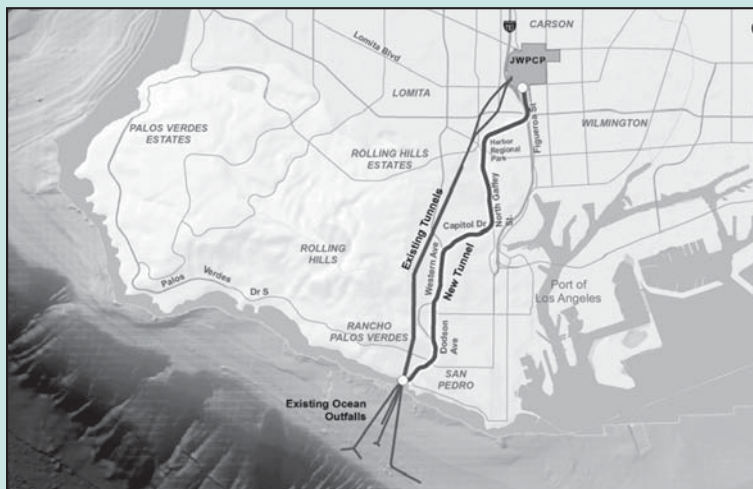
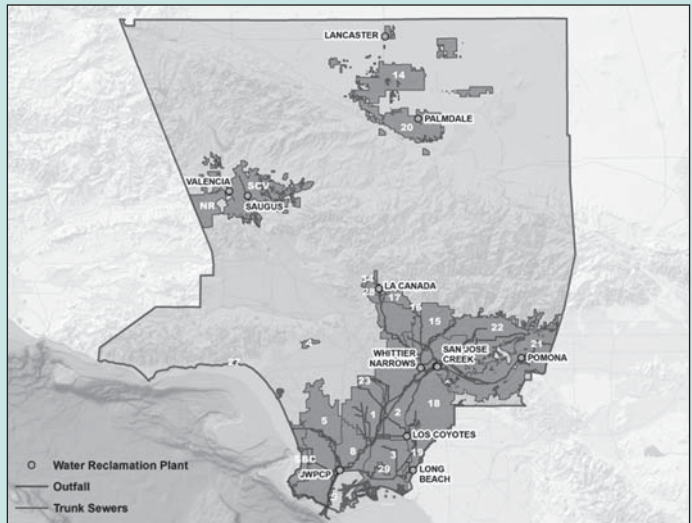
## CLEARWATER TUNNEL PROJECT

In 2006, the Sanitation Districts began a multi-year planning effort called the Clearwater Program to identify needed improvements to the Joint Outfall System through the year 2050. This effort included over 500 public meetings to inform the public and solicit input.

In 2012, the Sanitation Districts Board of Directors approved the Clearwater Program and its Environmental Impact Report. The approved program includes constructing a new tunnel to address critical aging infrastructure and enable the Sanitation Districts to continue providing safe and reliable wastewater treatment. Twenty-one tunnel alignments were evaluated and the selected route would result in the least environmental impacts as well as the lowest cost.

The existing tunnels (12- and 8-feet in diameter) are 60 and 80 years old, respectively, and are nearing the end of their service life. The existing tunnels are not built to current seismic (earthquake) standards and traverse two earthquake faults. Because the tunnels are interconnected and routine flow exceeds the capacity of the smaller tunnel, the tunnels cannot be removed from service for inspection or repair. Additionally, during heavy rains, water enters the sewer system causing higher than normal flows. The capacity of the existing tunnels was almost exceeded twice during storms in the last two decades, most recently in January 2017. The new tunnel will be built to current seismic standards and have sufficient capacity to accommodate peak storm flows.

The new tunnel will be 7-miles long, running from the JWPCP to Royal Palms Beach for connection to the existing ocean outfalls. The tunnel alignment is mostly under public rights-of-way (streets). Depending on the overlying topography, the tunnel is between 30 and 450 feet below ground surface. Construction is anticipated to start in 2018 at the JWPCP, where a shaft will be built to lower the tunnel boring machine. All soil excavated during tunneling will be removed at this shaft. The tunnel will end at Royal Palms Beach and be connected to the existing ocean outfalls by modifying an existing underground structure. A shaft will



temporarily be constructed here to remove the tunnel boring machine. The work at Royal Palms Beach is anticipated to start in 2023 and finish in 2025. After construction, the site and parking lot will be restored to pre-construction conditions.

Most of the remaining work will be underground. One exception is monitoring devices and ancillary equipment that will be installed in or near the streets overlying the tunnel alignment to ensure safe tunneling.

The Sanitation Districts are starting a new round of public outreach at the end of July 2017. For more information, contact Mr. Glenn Acosta, Senior Engineer with the Sanitation Districts, at 562-908-4288, extension 2304, or [gacosta@lacsdo.org](mailto:gacosta@lacsdo.org).




**S**outh Park, the South Bay's first universally accessible and natural playground, re-opened in January of 2016 after Phase 1 of completed renovations. Since then, the park has been a favorite for children of all ages and abilities and is often filled with the excitement of children on any given day. The opening marked a milestone of an eight-year commitment by dedicated and hard-working members of the community to create a re-modeled park space where children of all abilities could safely play. Not only is the park accessible, it was designed and built with a natural focus, bringing a one-of-a-kind park experience to Hermosa Beach and the South Bay!

Throughout 2015, South Park was transformed, due in large part from a \$150,000 grant from the Los Angeles County Regional Park and Open Space District, from an empty field with a concrete skate rink into a children's natural play space that includes a built-in hill slide, sensory huts, climbing features, playground equipment and a community garden. Many of the park design elements stemmed from ideas provided by children at View and Valley schools, making this project a true community effort. The Community Garden is bustling with vegetables, fruit and other fresh food, all of which are grown by residents of Hermosa Beach and coordinated through the Hermosa Beach Community Garden group. Looking ahead, there will be an

additional exterior youth garden where children will have the opportunity to learn and experience the planting and upkeep process of this portion of the garden, which will also include sensory benefits for visitors through the plants that will be carefully selected for planting.

In 2016, the Los Angeles County Regional Park and Open Space District awarded the City an additional \$300,000 grant towards continuing renovations of the park space, which allowed work on Phase II to begin. This additional funding goes towards shade structures, park benches, picnic tables and improvements to the adjacent parking lot, which will be completed in 2017. Additionally, 10% of the funds will go towards the funding of an employment program for at-risk youth per a City Council resolution and requirement of the grant.

In addition to grant and city funds, this project is also funded through tax-deductible donations ranging from brick purchases (\$250 each) to monetary donations earmarked for specific equipment. New equipment and park amenities are being added as funding becomes available, so this park is quickly becoming a gem in the South Bay for visitors of all ages.

South Park is located at 425 Valley Drive, Hermosa Beach. For more information contact the Hermosa Beach Public Works Department at (310) 318-0214. 



As part of the City of Rancho Palos Verdes (RPV) updated Public Safety Strategic Plan, one of the strategies the City continues to expand is utilizing technology to make neighborhoods safer. With more and more residents using smartphones these days, it makes sense to pursue public safety initiatives that allow residents to use and enhance the capabilities of technology that they already have access to.

Ring has become a leader in the field of doorbell security cameras, which local law enforcement has increasingly found to be a useful form of technology in crime prevention and crime solving efforts. Ring's mission is to reduce crime in communities and their security camera devices allow homeowners to monitor their property from a smartphone, tablet or PC. Ring devices also include built-in microphones and speakers, so that homeowners can see, hear and speak to anyone on their property from anywhere. Homeowners can then easily share videos with neighbors and with law enforcement. Using these capabilities, homeowners can essentially form Ring "neighborhoods" as a public safety tool to build upon existing Neighborhood Watch efforts for the digital age.


In recognition of the potential value of doorbell security cameras, RPV and the Los Angeles County Sheriff's Department negotiated with Ring.com to provide RPV residents with a discount on select devices. In addition to the discount offered directly by Ring, RPV also offered a limited number of \$50-per-household incentives. As a testament to the City Council's belief in this program, \$100,000 was allocated for City incentives.

Another way RPV residents can utilize existing technology to keep their neighborhoods safe is by reporting graffiti using their smartphones. In 2015, the City joined forces with its 24/7 graffiti cleanup contractor, Graffiti Protective Coatings (GPC), and launched the "myRPV" app.


The "myRPV" app allows residents to photograph and report graffiti on City streets and other public property. The reports are tracked in real-time, shared with City Staff and the Sheriff's Department, and responded to by GPC - generally within 24 hours. The rapid response and cleanup afforded by the "myRPV" app provides residents with a means to remain engaged and connected with the City.



Based upon their successes to date, the RPV City Council, Staff and the Sheriff's Department are committed to making their neighborhoods safer through the strategic use technology to assist in these efforts.

For additional information about public safety programs, please contact Jacqueline Ruiz, Administrative Analyst in the City Manager's Office, at (310) 544-5305 or [jruiz@rpvca.gov](mailto:jruiz@rpvca.gov). For additional information about the myRPV app please contact City of Rancho Palos Verdes Public Works department at (310) 544-5252. 

## SBCCOG GIS WORKING GROUP REPRESENTS SOUTH BAY AT ESRI CONFERENCE

In early July, members of the SBCCOG GIS Working Group participated in the annual Esri User Conference, "Applying the Science of Where". Shown in the conference Map Gallery with their work are GIS city professionals (left to right): Alex Rocco, Carson ("City of Carson Health Hazards Atlas"); Sunny Lai, Torrance ("One Mile One Charge"); Bonnie Shrewsbury, Manhattan Beach ("GIS Supports New IT Initiatives"); Lina Nguyen, Rancho Palos Verdes ("GIS Web Maps For the Public"); Michael McDaniel, El Segundo ("Retirement in the South Bay"); Pei-San Tsai, Port of LA ("Decades of LA Waterfront Development"); Abiola Fanu, Inglewood; Sonali Tambe, Hermosa Beach ("Art in Hermosa Beach"); Stephen Lavey, Torrance. Not pictured: Ryan Tucker, Redondo Beach, Elsa Moreno, Inglewood, Jinho Kang, West Basin Municipal Water District. 





# Food *for* Thought

## WILL VIRTUAL REALITY BECOME PART OF EVERYDAY LIFE?

By Ben Waugh, Marketing Coordinator for Meetoo, a live polling and messaging app. Excerpted from article: [www.meetoo.com/blog/2016/the-future-of-the-virtual-reality-world](http://www.meetoo.com/blog/2016/the-future-of-the-virtual-reality-world)

We have seen many large organizations entering the virtual reality market such as Samsung, Google and Microsoft. ...So, given the hype we decided that we would try it in our office for the day! The VR experience really felt like you were in a different world. The combination of graphics, sound and being immersed into the story-line, made it an experience like no other. One aspect of the VR headset that I thought was extraordinary was the full 360 visuals, where you can explore the surroundings and environment. The headset and controls monitors your movements and the response is remarkable, any slight movement you make is imitated through the VR headset. ... It is clear that virtual reality will have a strong impact on several industries in the future. Virtual reality will become even more accessible within everyday jobs with people using it for medical training, new building designs, training and learning and other experiences.

### 1. Training and Learning

Virtual reality will see an increase of usage especially within training and learning settings. This includes a range of different sectors from education to healthcare to large corporations.

Education establishments can use VR to engage their students and instead of explaining stories or scenarios, students will now be able to experience them. Businesses can use VR for training purposes such as creating training experiences for pilots, engineers or for physical and mental training. Assessors or training managers will also be able to gain feedback from the technology on the progress of employees. The opportunities of VR within the learning/training environments are plentiful.

### 2. Healthcare

Virtual reality technology has already been embraced by the healthcare industry for these reasons: helping doctors visualize operational procedures, helping to cure stress related syndromes and for medical training experiences.

A doctor in the United States used a Google VR cardboard to help map out an operation and it helped save a baby's life. The doctors who needed to perform open heart surgery on the baby could see every angle of the baby's heart on the images through the VR headset. ...

### 3. Recruitment

Lloyds Banking Group are planning a new scheme to use VR as a way of assessing candidates for jobs within their interview process. This shows how organizations are embracing new technologies and using it to benefit them and their employees (or future employees in this circumstance). This new scheme will assess candidates through virtual situations to see how they react within certain tasks or scenarios.

### 4. Tourism

Instead of viewing pictures of your next holiday destination or hotel, imagine if you could experience the holiday before booking it. Well, now you can explore hotels and destinations within a virtual reality setting without even moving from your seat. You can see the full 360 degree videos of the hotels or destination and move around the surroundings to feel like you are there. The 'try before you buy' tool can now (to some extent) be applied to the tourism industry.

### 5. Meetings and Everyday Communication

The future of your conference calls or meetings could well be in a virtual reality world. ... Imagine if you could see the whole room through the 360 degrees immersive content on a VR headset and really feel like you are in the same meeting room. VR could change the ways we communicate and interact with each other within meetings.

## CALENDAR

All meetings are open to the public

### August

- 8 GIS Working Group
- 9 Infrastructure Working Group
- 14 Steering Committee  
Transportation Committee
- 17 Economic Development  
Directors' Roundtable
- 24 **Board of Directors**
- 30 Short Term Rental Task Force

### September

- 11 Steering Committee  
Transportation Committee
- 12 GIS Working Group
- 13 Infrastructure Working Group  
Homeless Services Committee
- 26 Senior Services Working Group
- 28 **Board of Directors**

### October

- 5 Social Media Working Group
- 9 Steering Committee  
Transportation Committee
- 10 GIS Working Group
- 11 Infrastructure Working Group
- 12 Legislative Briefing
- 19 Economic Development  
Directors' Roundtable
- 26 **Board of Directors**

Contact [jacki@southbaycities.org](mailto:jacki@southbaycities.org) for further information.

Published 7/25/17

**The quarterly South Bay Watch  
is available electronically  
by email or at  
[www.southbaycities.org](http://www.southbaycities.org).  
To receive by email, please send  
your email address to  
[sbccog@southbaycities.org](mailto:sbccog@southbaycities.org)**