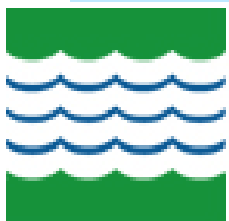
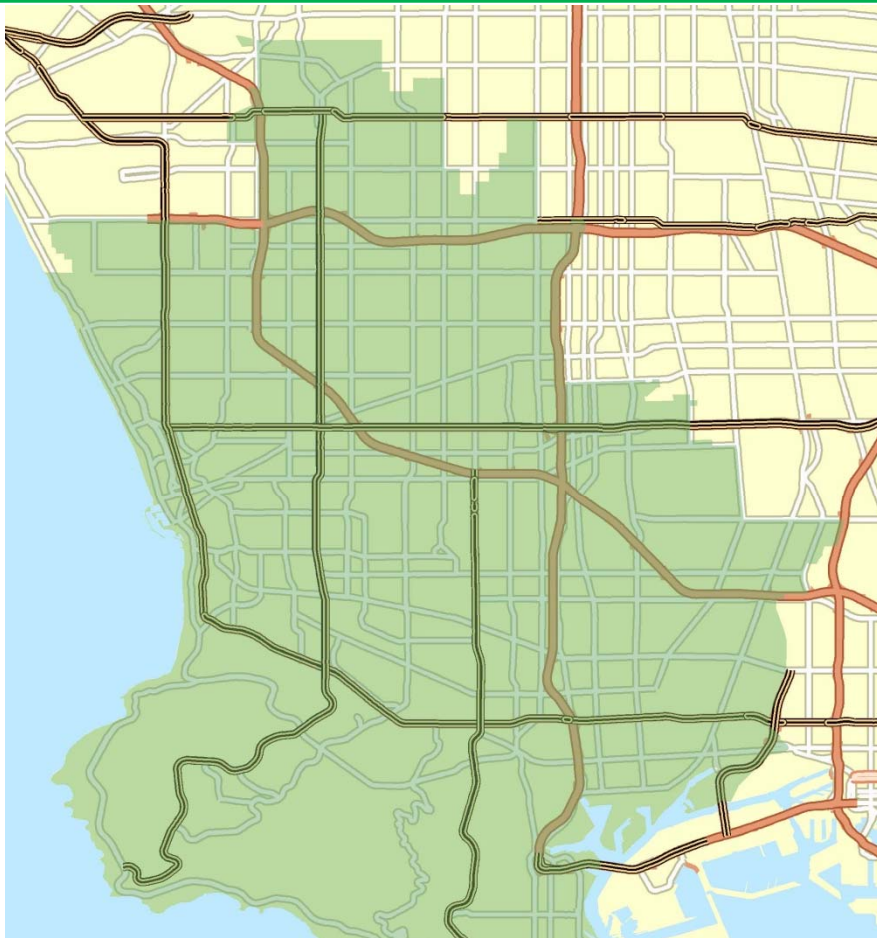


South Bay

Measure R Highway Program Final Implementation Plan Part D: Funding Program



SOUTH BAY CITIES
COUNCIL OF GOVERNMENTS

April 25, 2013

Version 4

Prepared By:

Stephen H. Lantz

SBCCOG South Bay Measure R Project Manager

and



In association with:

InfraConsult

Jacobs Engineering

Sharon Greene & Associates

System Metrics Group

Table of Contents

Executive Summary.....	i
Funding Program.....	1

Implementation Plan Executive Summary

The South Bay Cities Council of Governments (SBCCOG) is partnering with the Los Angeles County Metropolitan Transportation Authority (Metro), California Department of Transportation (Caltrans), and South Bay jurisdictions to fund transportation projects that increase mobility, safety, and sustainability on transportation corridors in the South Bay.

The Measure R one-half percent sales tax to fund transportation in Los Angeles County was approved by Los Angeles County voters in November 2008. Measure R provides a specific, dedicated funding source for program projects to improve state highway operations in the South Bay region of Los Angeles County totaling \$906 million in 2008 dollars (or an estimated \$1.5 billion escalated to year of expenditure dollars) over the 30-year life of Measure R, called the South Bay Measure R Highway Program (SBHP).

Based on system performance monitoring and identified system needs, the SBCCOG develops a prioritized program of projects and oversees project implementation in partnership with each lead local agency, Metro and Caltrans. Project funding allocations are recommended by the SBCCOG Board for approval by the Metro Board in rolling five to seven year increments, updated on an annual basis. SBHP projects are delivered by agencies under funding agreements with Metro.

The SBHP Implementation Plan provides the SBCCOG a framework to rationally and systematically prioritize projects, leverage other local, state and federal fund resources, and close the potential funding gap for the completion of projects over the life of Measure R.

The SBHP Implementation Plan is comprised of four sections:

Part A: Policies guiding the program, project development, the allocation of funds to design and construct highway improvement projects, and oversight of project delivery are documented in this section. The policies related to Measure R, including the Measure R ordinance, related Metro policies, and SBCCOG policies to manage the SBHP, are slated to provide guidance in the ongoing management of the program. Part A also describes the roles and responsibilities of agencies and their staffs involved in the allocation of funds and delivery of projects. The program management aspects of the SBHP are described in detail, such as administrative activities, oversight and risk management, training, and project development. Finally, Part A documents the Strategic Transportation Element (STE) which identifies measures for project definition and assessment and the results of Intelligent Transportation Systems planning activity (ITS Plan) in the South Bay.

Part B: Procedure Manual describes the procedures and processes used to implement the SBHP. Part B is intended to clarify the procedures and processes in the program management, project development, and funding allocation decision-making for the implementing agencies, the SBCCOG, and Metro.

Part C: Strategic Implementation Element focuses on how to implement the STE and ITS Plan. The Highway Monitoring System described in Part C is the systems framework for identification, development and performance monitoring of projects for implementation through the SBHP. The STE identifies performance measures for the evaluation and assessment of freeway and arterial projects which are part of the SBHP. The ITS Work Plan includes a need identification and implementation planning for intelligent transportation systems as a first step in identifying sub-regional transportation needs to be addressed comprehensively through the SBHP.

Part D: Funding Program lists the funding allocations to individual projects and programs which comprise the SBHP. The funding allocations are updated on an annual basis to ensure the readiness of projects to receive funds. This is to ensure the use of available program funds and to maximize funding opportunities from additional sources.

Part D: Funding Program

Measure R Highway Operational Improvements Project List
Proposed Project List and Ten-Year Allocation (Fiscal Years subject to MTA priority setting & budget processes)

(Programmed Dollars in Thousands)
First 5 Year Allocation Second 5 Year Allocation

(C)hange (A)dd	Lead Agency	Funding Agreement No.	HwyID/ EA or ID	Project/Location	Total Allocation (10 yr)	PRIOR Years	2012 2013	2013 2014	2014 2015	2015 2016	2016 2017	2017 2018	2018 2019
INTERSTATE 405, I-110, I-105, and SR-91 RAMP and INTERCHANGE IMPROVEMENTS (SOUTH BAY) (57 projects - 11 New)					192,140	20,873	35,075	39,658	57,240	21,455	726	4,831	6,191
10 Year Forecasted Funds in Long Range Plan (Cumulative)					237,200								
C	SBHP			Early Action Contingency	3,500	2,500		1,000					
	SBHP			Program Contingency	4,377	474	800		750	2,353			
C	SBHP			Strategic Positioning Projects Reserve	17,200				4,300	12,900			
				SBHP Total	25,077	2,974	800	1,000	5,050	15,253			
C	SBCCOG	MR312.01	#N/A	South Bay Cities COG Program Development & Oversight and Program Administration	6,754	1,835	742	696	702	674	726	634	744
C	SBCCOG	MR312.31	11124/F29	South Bay Subregional ITS Plan	7,000		5,000	2,000					
				SBCCOG Total	13,754	1,835	5,742	2,696	702	674	726	634	744
	Caltrans	MR312.11	11107/29380	ITS: I-405, I-110, I-105, SR-91 at freeway ramp/arterial signalized intersections	5,000	5,000							
C	Caltrans	MR312.24	11108/29370	PAED I-110 Aux lane from SR-91 to Torrance Blvd Aux lane & I-405/I-110 Connector	1,150			1,150					
	Caltrans	MR312.25	11109/29360	PAED I-405 at 182nd St. / Crenshaw Blvd	1,700			1,700					
C	Caltrans	MR312.29	11120/TBD	ITS: Pacific Coast Highway and Parallel Arterials From I-105 to I-110	9,000		7,000	7,000	2,000				
C	Caltrans	MR312.30	11121/TBD	PID/PSR/PDS for I-405 from I-110 to I-105 and I-105 from I-405 to Crenshaw Blvd	1,000		1,000						
A	Caltrans	TBD	TBD	PAED Integrated Corridor Management System (ICMS) on I-110 from Artesia Blvd and I-405	1,000								1,000
				Caltrans Total	18,850	5,000	1,000	9,850					
	Carson	MR312.37	11138/N34	Sepulveda Blvd widening from Alameda Street to ICTF Driveway	1,158		1,158						
				Carson Total	1,158		1,158						
	El Segundo	MR312.22	11147/N69	Maple Ave improvements from Sepulveda Blvd to Parkview Ave	2,500	2,500							
C	El Segundo	MR312.27	11113/F39	Sepulveda Blvd improvements from Imperial Highway to Crenshaw Blvd	400				400				
C	El Segundo	MR312.39	11141/N46	Vista Del Mar realignment north of southern El Segundo City Limit	1,500			150	1,350				
				El Segundo Total	4,400	2,500		150	1,750				
	Gardena	MR312.17	11140/N42	Rosecrans Ave improvements from Vermont Ave to Crenshaw Blvd	5,140	300	317	4,523					
	Gardena	MR312.19	11146/N53	Artesia Blvd at Western Ave intersection improvements (WB left turn lanes)	675	75		600					
	Gardena	MR312.21	11149/N67	Vermont Ave improvements from Rosecrans Ave to 182nd Street	2,350	150	132	2,068					
A	Gardena	TBD	TBD	Construct one park and ride facility at SE corner of Rosecrans & Wadkins (Call Match)	427							213	214
				Gardena Total	8,592	525	449	7,191				213	214
	Hawthorne	MR312.03	11118/F11	Rosecrans Ave widening from I-405 SB off ramp to Isis Ave	2,100	2,100							
	Hawthorne	MR312.33	11127/N14	Aviation Blvd at Marine Ave intersection improvements (WB right turn lane)	2,100		600			1,500			
C	Hawthorne	MR312.44	11152/N26	Hawthorne Blvd improvements from El Segundo Blvd to Rosecrans Ave	4,171		4,171						
A	Hawthorne	TBD	TBD	Signal improvements on Prairie Ave from 118th St. to Marine Ave. (Call Match)	1,237							618	619
				Hawthorne Total	2,906							618	619
				Hawthorne Total	9,608	2,100	4,771			1,500		618	619
C	Hermosa Beach	MR312.05	11114/F45	Pacific Coast Highway improvements from Artesia Blvd to Anita Street	368	368							

Measure R Highway Operational Improvements Project List
Proposed Project List and Ten-Year Allocation (Fiscal Years subject to MTA priority setting & budget processes)

(Programmed Dollars in Thousands)
First 5 Year Allocation Second 5 Year Allocation

(C)hange (A)dd	Lead Agency	Funding Agreement No.	HwyID/ EA or ID	Project/Location	Total Allocation (10 yr)	First 5 Year Allocation			Second 5 Year Allocation					
						PRIOR Years	2012 2013	2013 2014	2014 2015	2015 2016	2016 2017	2017 2018	2018 2019	
C	Hermosa Beach	MR312.38	11139/F44	Pacific Coast Highway at Aviation Blvd intersection improvements (SB left turn lanes)	872					872				
A	Hermosa Beach	TBD	TBD	Roadway, signalization on Aviation Blvd from Prospect Ave to PCH and on PCH (SR-1) from Artesia Blvd to Herond St	900								450	450
				Hermosa Beach Total	2,140	368				872				
C	Inglewood	MR312.02	11142/F2	I-405 off ramp improvements at Manchester Blvd.	186	186								
	Inglewood	MR312.12	11122/N6	ITS: City of Inglewood Citywide ITS Master Plan	3,500	300	3,200							
A	Inglewood	TBD	TBD	La Cienega Blvd and Manchester Blvd geometric improvements (Call Match)	770								385	385
A	Inglewood	TBD	TBD	ITS: Phase V of Inglewood's ITS Upgrades (Call Match)	586 700								85 350	501 350
				Inglewood Total	5,042	486	3,200						470	886
A	LA City	TBD	TBD	Improve Anaheim St. from Farragut Ave. to Dominguez Channel (Call Match)	2,354								1,177	1,177
				LA City Total	2,354								1,177	1,177
	LA County	MR312.16	11123/N32	Del Amo Blvd improvements from Normandie Blvd to Vermont Ave	26,920		1,000	1,000	24,920					
A	LA County	TBD	TBD	ITS: Improvements on South Bay arterials (Call Match)	1,138 1,540								153 770	985 770
				LA County Total	28,058		1,000	1,000	24,920				153	985
	Lawndale	MR312.15	11132/N22	Inglewood Ave widening from 156th Street to I-405 southbound on-ramp	500	100	400							
	Lawndale	MR312.36	11135/N25	ITS: City of Lawndale Citywide improvements	1,500		150		1,350					
A	Lawndale	TBD	TBD	Redondo Beach Blvd improvements from Hawthorne Boulevard to Prairie Ave.	2,041								1,020	1,021
				Lawndale Total	4,041	100	550		1,350					
C	Lomita	MR312.43	11151/F53	Intersection Improvements at Western/Palos Verdes Dr and PCH/Walnut	900			90	810					
				Lomita Total	900			90	810					
	Manhattan Beach	MR312.04	11119/F42	Sepulveda Blvd at Marine Ave intersection improvements (WB left turn lanes)	235	235								
	Manhattan Beach	MR312.28	11117/F41	Seismic retrofit of widened Bridge 53-62 from Sepulveda Blvd from 33rd Street to south of Rosecrans Ave	9,100		4,550	4,550						
	Manhattan Beach	MR312.32	11126/N13	Aviation Blvd at Marine Ave intersection improvements (SB left turn lanes)	1,500			1,500						
	Manhattan Beach	MR312.34	11129/N57	Aviation Blvd at Artesia Blvd intersection improvements (SB right turn lane)	1,500					1,500				
	Manhattan Beach	MR312.35	11133/F43	Sepulveda Blvd at Manhattan Beach Blvd intersection improvements (NB, WB, EB left turn lanes and SB right turn lane)	980			980						
				Manhattan Beach Total	13,315	235	4,550	7,030		1,500				
	Redondo Beach	MR312.06	11116/F46	Pacific Coast Highway improvements from Anita Street to Palos Verdes Blvd	1,400	1,400								
	Redondo Beach	MR312.07	11136/F47	Pacific Coast Highway at Torrance Blvd intersection improvements (NB right turn lane)	585	59	527							
	Redondo Beach	MR312.08	11137/F48	Pacific Coast Highway at Palos Verdes Blvd intersection improvements (WB right turn lane)	320	32	288							
	Redondo Beach	MR312.13	11130/N17	Aviation Blvd at Artesia Blvd intersection improvements (EB right turn lane)	22	22								
	Redondo Beach	MR312.14	11153/N19	Inglewood Ave at Manhattan Beach Blvd intersection improvements (EB right turn lane)	30	30								
	Redondo Beach	MR312.20	11128/N58	Aviation Blvd at Artesia Blvd intersection improvements (NB right turn lane)	847	847								

Measure R Highway Operational Improvements Project List
Proposed Project List and Ten-Year Allocation (Fiscal Years subject to MTA priority setting & budget processes)

(Programmed Dollars in Thousands)
First 5 Year Allocation Second 5 Year Allocation

(C)hange (A)dd	Lead Agency	Funding Agreement No.	HwyID/ EA or ID	Project/Location	Total Allocation (10 yr)	First 5 Year Allocation			Second 5 Year Allocation					
						PRIOR Years	2012 2013	2013 2014	2014 2015	2015 2016	2016 2017	2017 2018	2018 2019	
	Redondo Beach	MR312.42	11150/N18	Inglewood Ave at Manhattan Beach Blvd intersection improvements (SB right turn lane)	5,175			518	4,658					
				Redondo Beach Total	8,379	2,390	815	518	4,658					
	Torrance	MR312.09	11115/F49	Pacific Coast Highway improvements from Palos Verdes Blvd to Crenshaw Blvd	1,840			184	1,656					
	Torrance	MR312.10	11134/F51	Pacific Coast Highway at Hawthorne Blvd intersection improvements	19,600	1,300		300	18,000					
	Torrance	MR312.18	11145/N47	Maple Ave at Sepulveda Blvd intersection improvements (SB right turn lane)	600	60	540							
	Torrance	MR312.23	11143/P4	Torrance Transit Park and Ride Regional Terminal Project 465 Crenshaw Blvd	18,100	1,000	10,500	6,600						
C	Torrance	MR312.26	11111/F58	I-405 at 182nd St. / Crenshaw Blvd operational improvements	300			300						
	Torrance	MR312.40	11144/F50	Pacific Coast Highway at Vista Montana/Anza Ave intersection improvements	2,900			2,900						
A	Torrance/ Los Angeles	TBD	TBD	Add turn lanes on Western Av. at Sepulveda Blvd. (Call Match)	<u>2,082</u> 737								<u>1,041</u> 368	<u>1,041</u> 369
A	Torrance	TBD	TBD	Widen 182nd St., Lomita Blvd, Spencer St. and Emerald St. at Hawthorne Blvd. to allow right turn lanes (Call Match)	1,050								525	525
				Torrance Total	46,472	2,360	11,040	10,284	18,000	1,656		1,566	1,566	
INTERSTATE 405, I-110, I-105, and SR-91 RAMP and INTERCHANGE IMPROVEMENTS (SOUTH BAY) (57 projects - 11 New)					192,140	20,873	35,075	39,658	57,240	21,455	726	4,831	6,191	